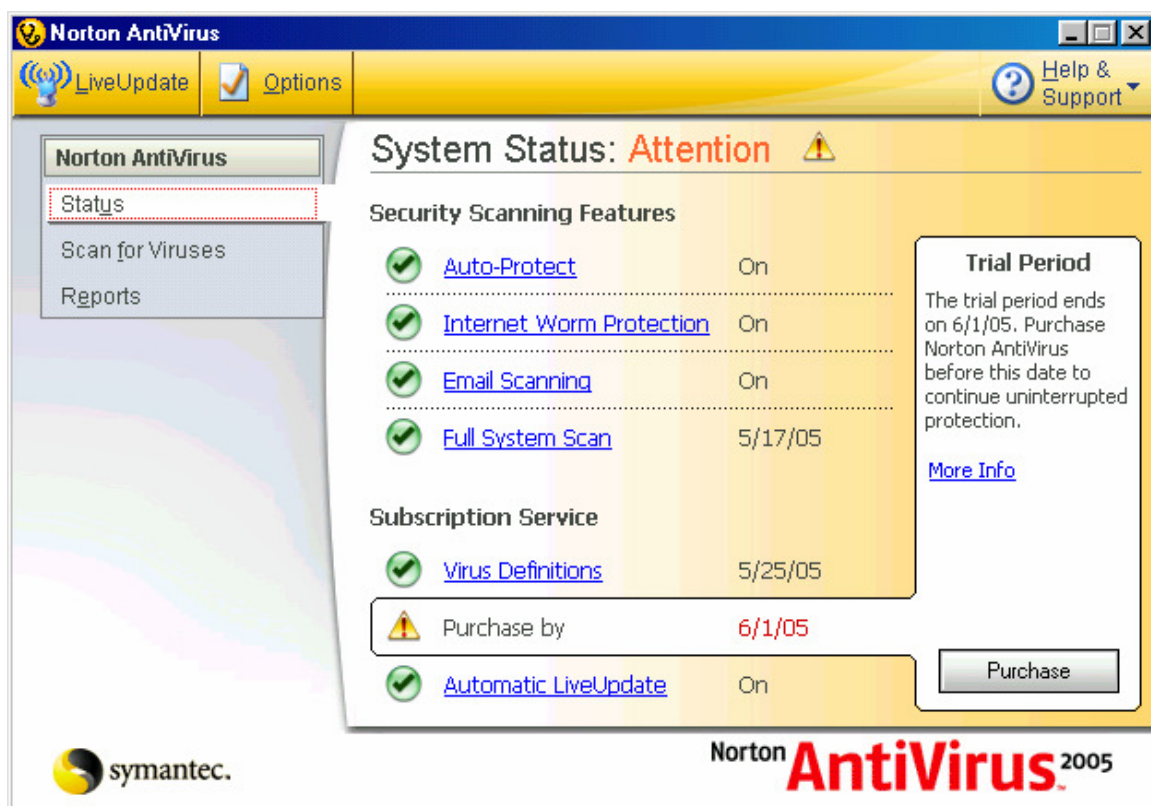
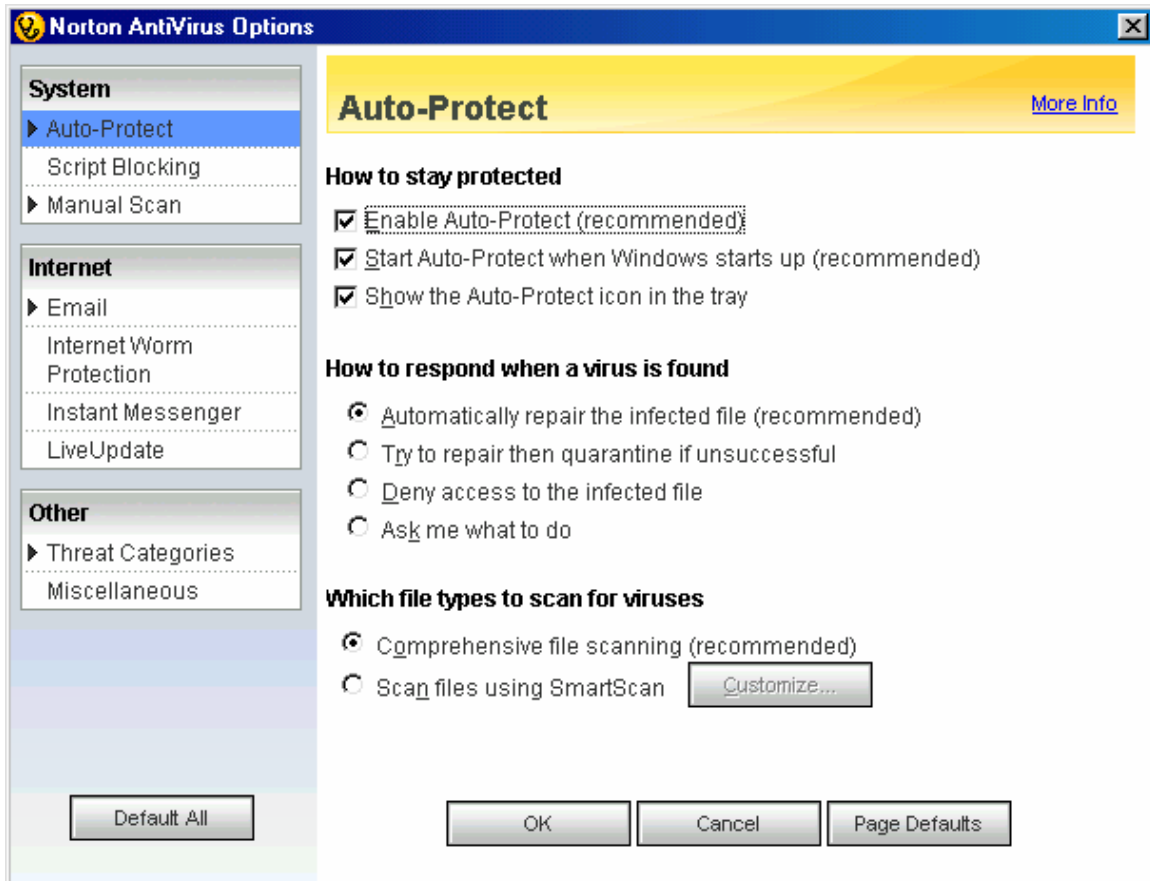


Updating Norton Anti-Virus to work with FocalpointNet DNS addressing

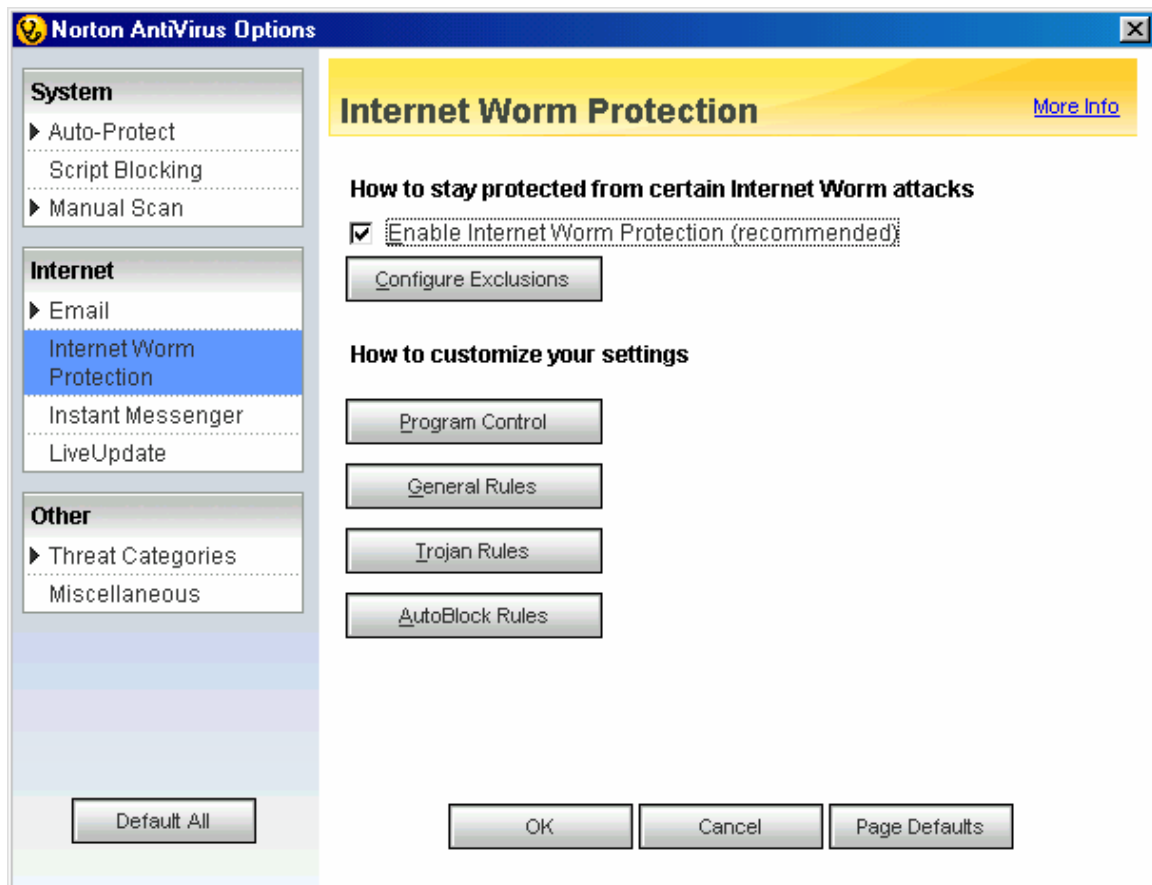
1. Open Norton Anti-Virus and click on “Options”.



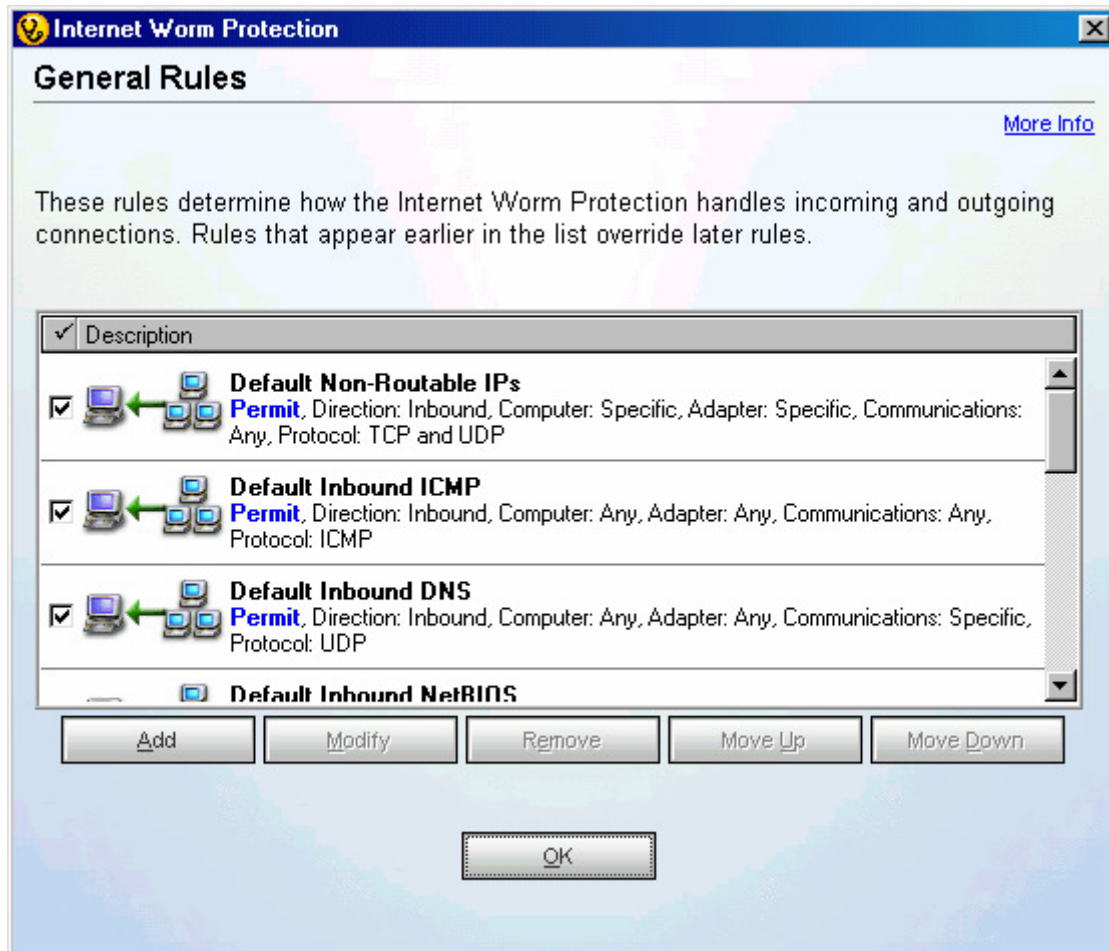
2. On left side of the screen click on “Internet Worm Protection”



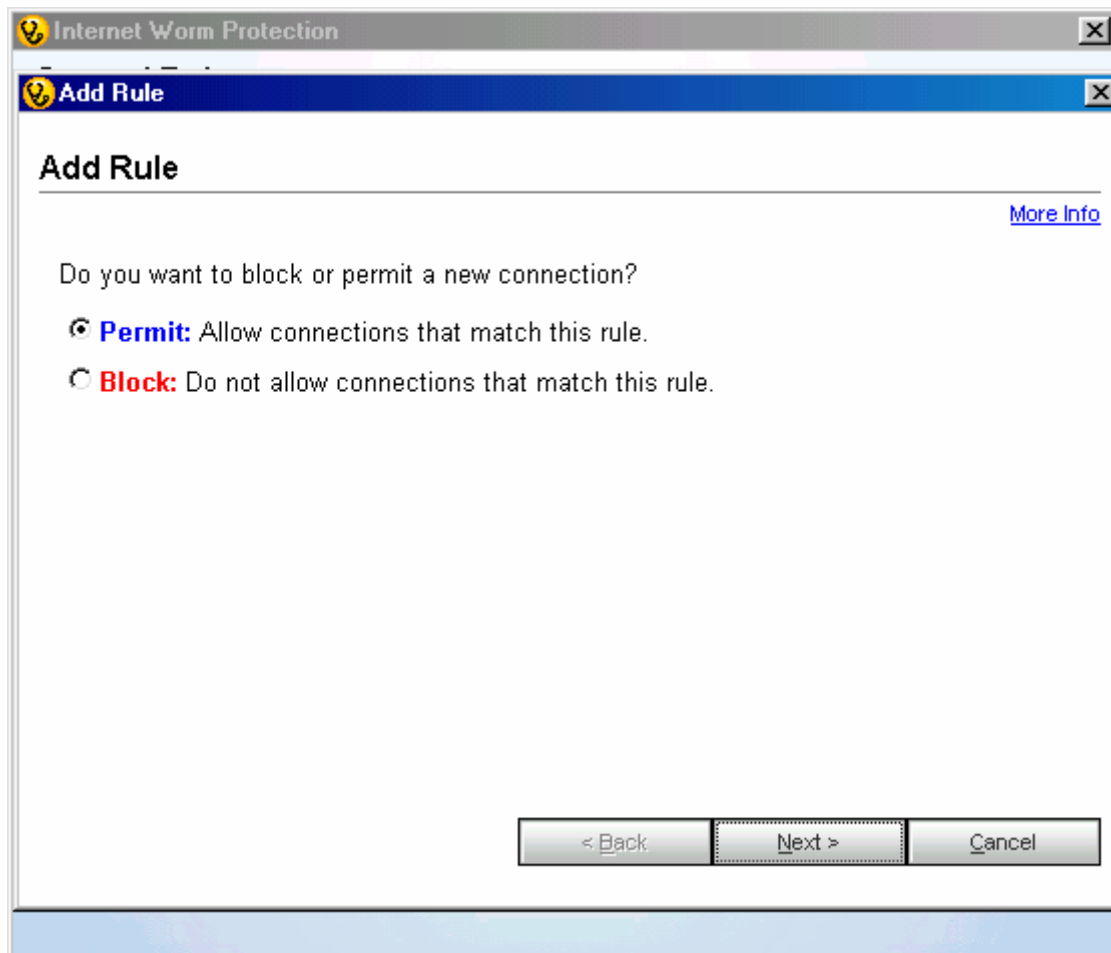
4. Click on “General Rules”



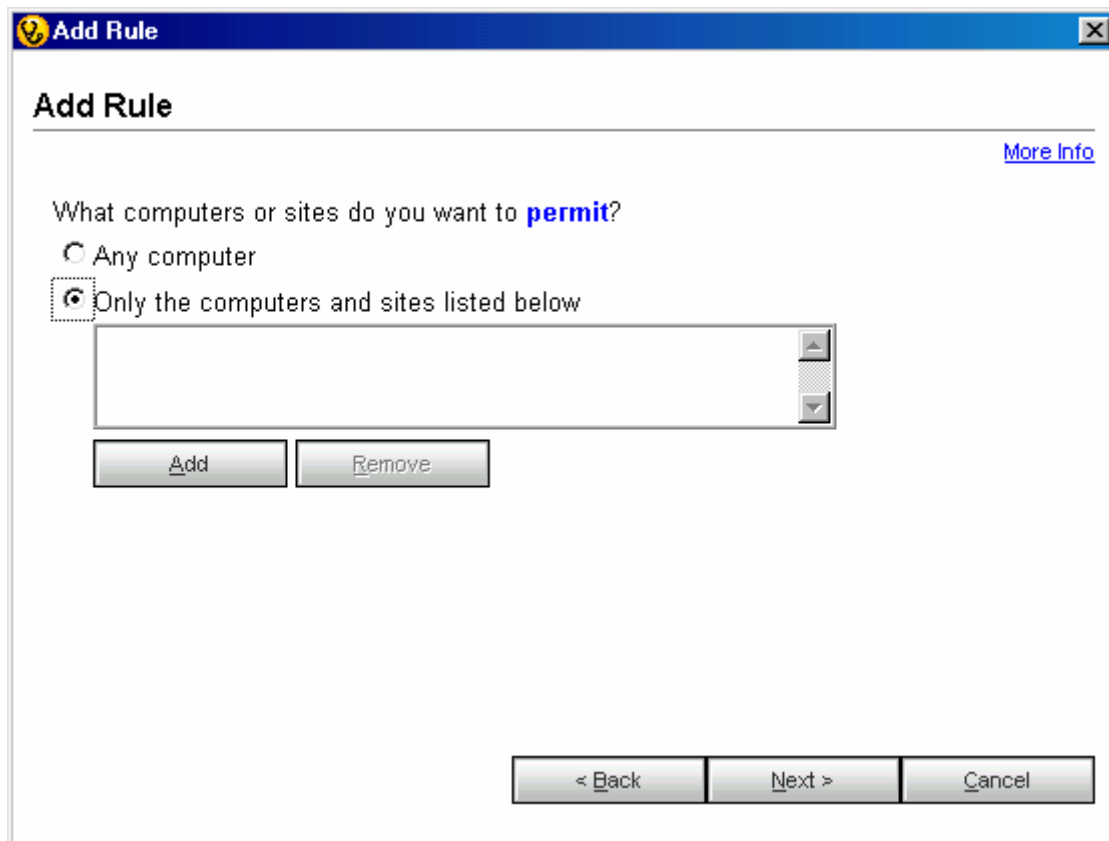
5. Click on “Add”





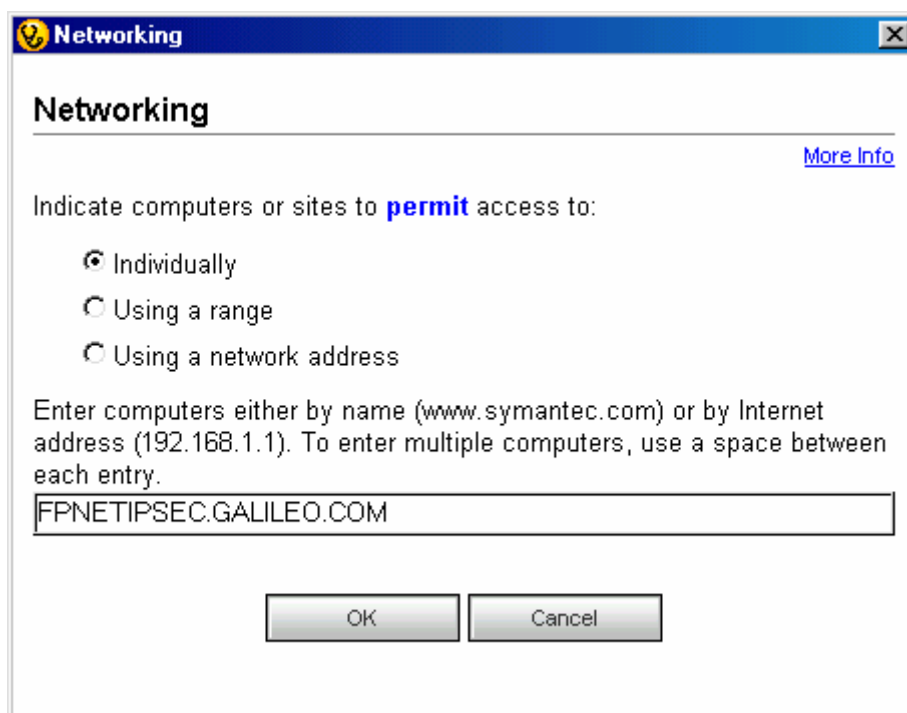
6. Insure Permit is selected then click on “Next”



7. Click on “Only the computers and sites listed below”. Then Click on “Add”.



- 
- 
8. Click on “Individually”. Then add in the DNS name for your connection to Galileo.
FPNETIPSEC.GALILEO.COM or
FPNETNATT.GALILEO.COM or
FPNETPPTP.GALILEO.COM or
FPNETGIDS.GALILEO.COM
Then click “OK”.



9. Check “Next”

Add Rule

[More Info](#)

What computers or sites do you want to **permit**?

Any computer

Only the computers and sites listed below

Single	Name: FPNETIPSEC.GALILEO.COM
Address	



10. Check “TCP and UDP”. Then check “All types of communication (all ports, local and remote)” Then click on “Next”

Add Rule

[More Info](#)

What protocols do you want to **permit**?

TCP

UDP

TCP and UDP

ICMP

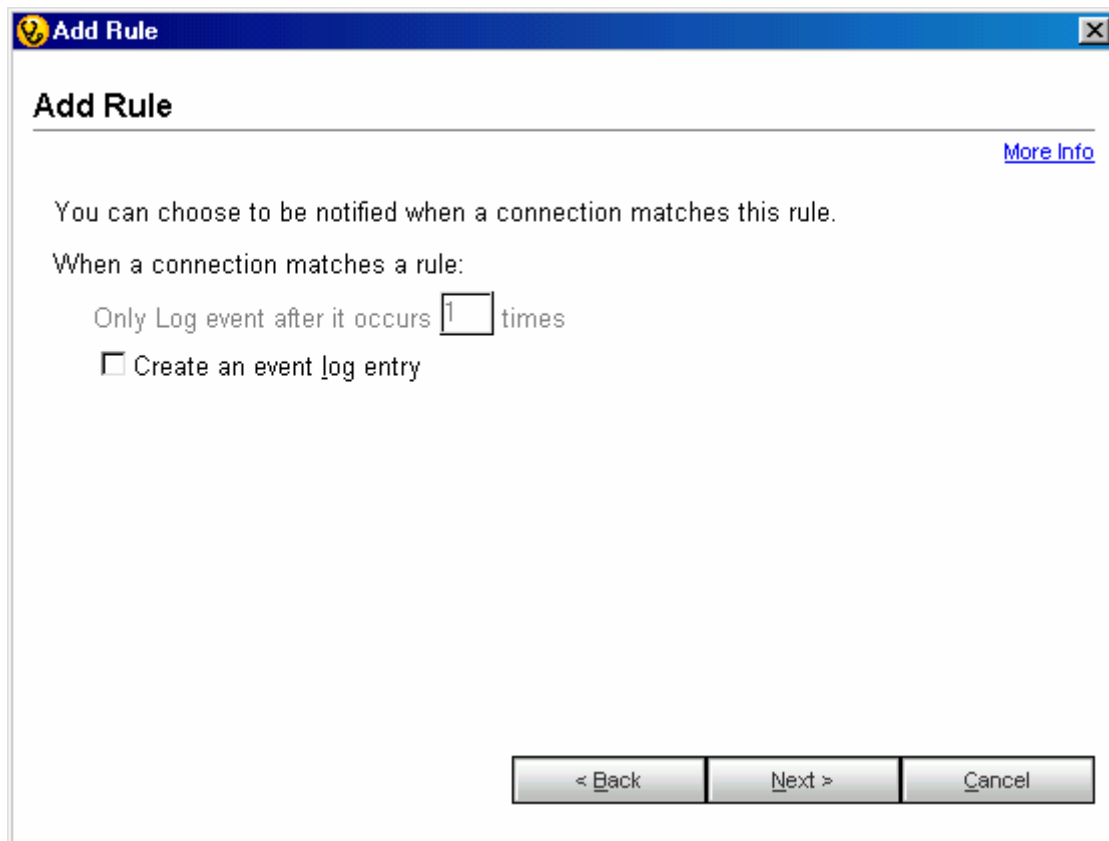
What types of communication, or ports, do you want to **permit**?

All types of communication (all ports, local and remote)

Only the types of communication or ports listed below



11. Click on “Next”



Add Rule

[More Info](#)

You can choose to be notified when a connection matches this rule.

When a connection matches a rule:

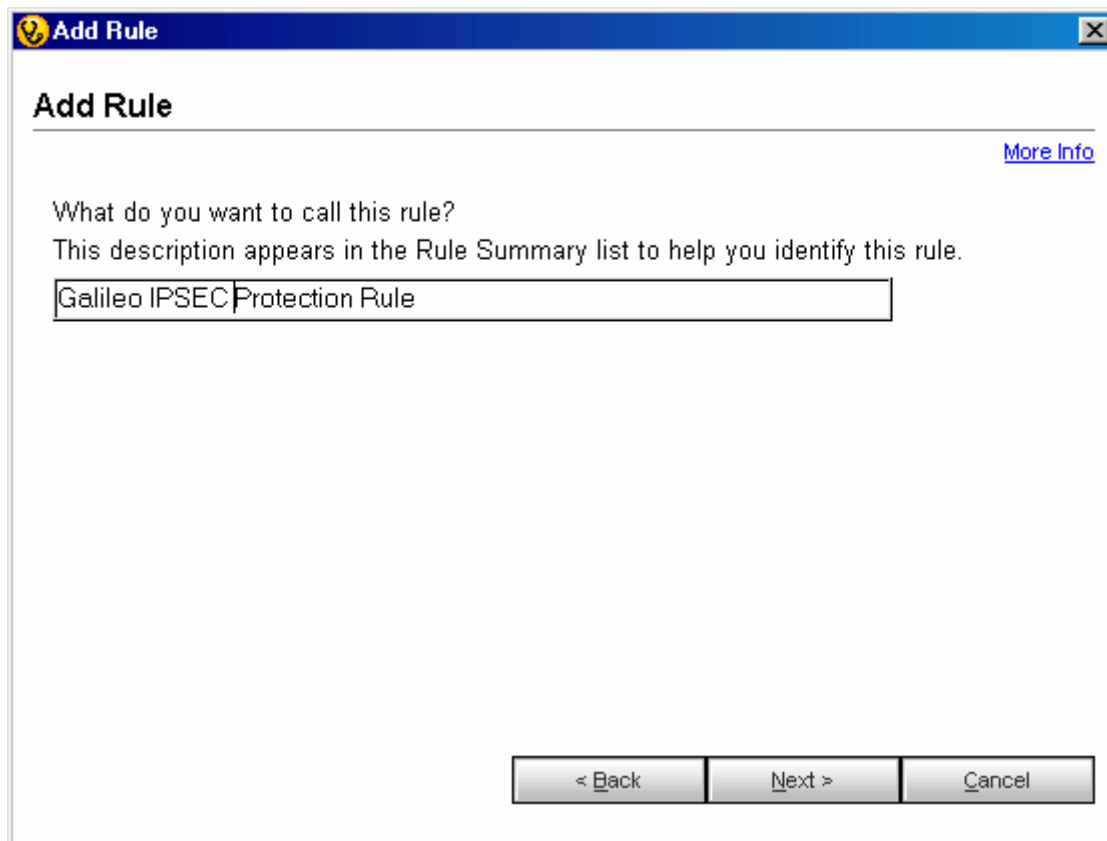
Only Log event after it occurs times

Create an event log entry

< Back Next > Cancel



12. Give the rule a name that is easily identifiable. Then click on “Next”



Add Rule


[More Info](#)

What do you want to call this rule?
This description appears in the Rule Summary list to help you identify this rule.

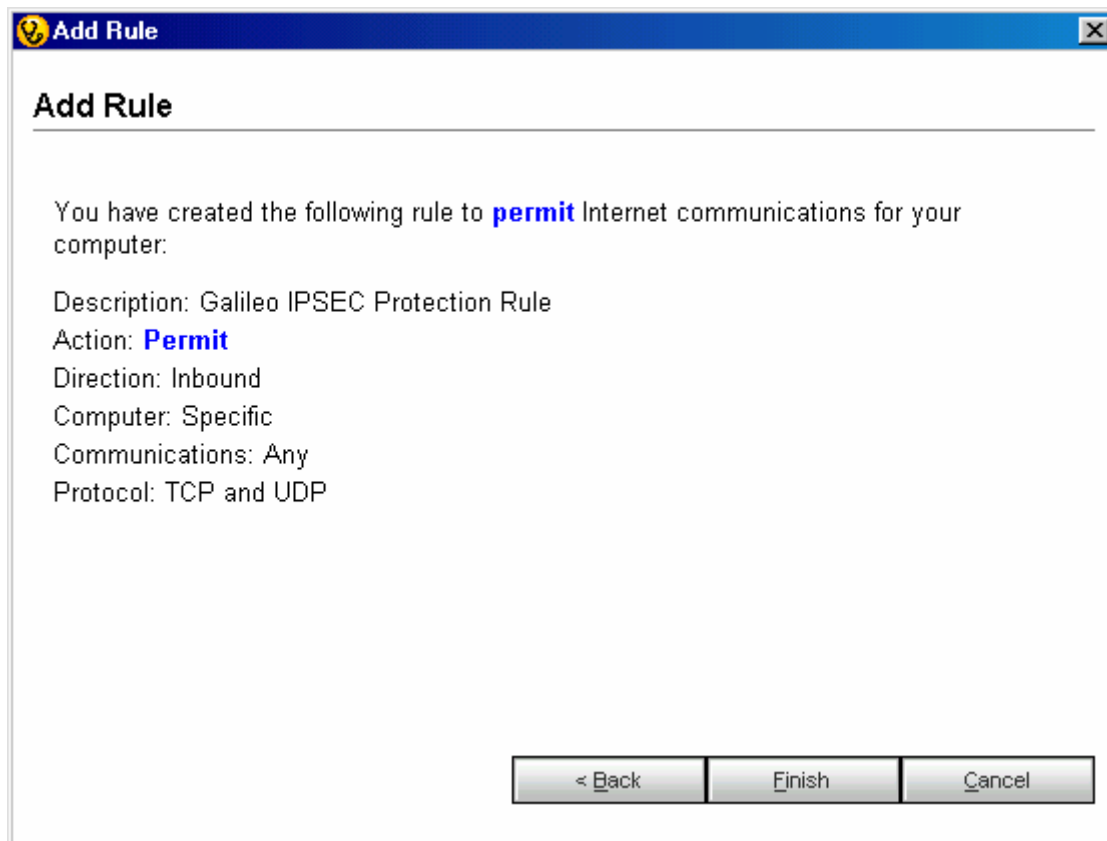
Galileo IPSEC Protection Rule

< Back Next > Cancel

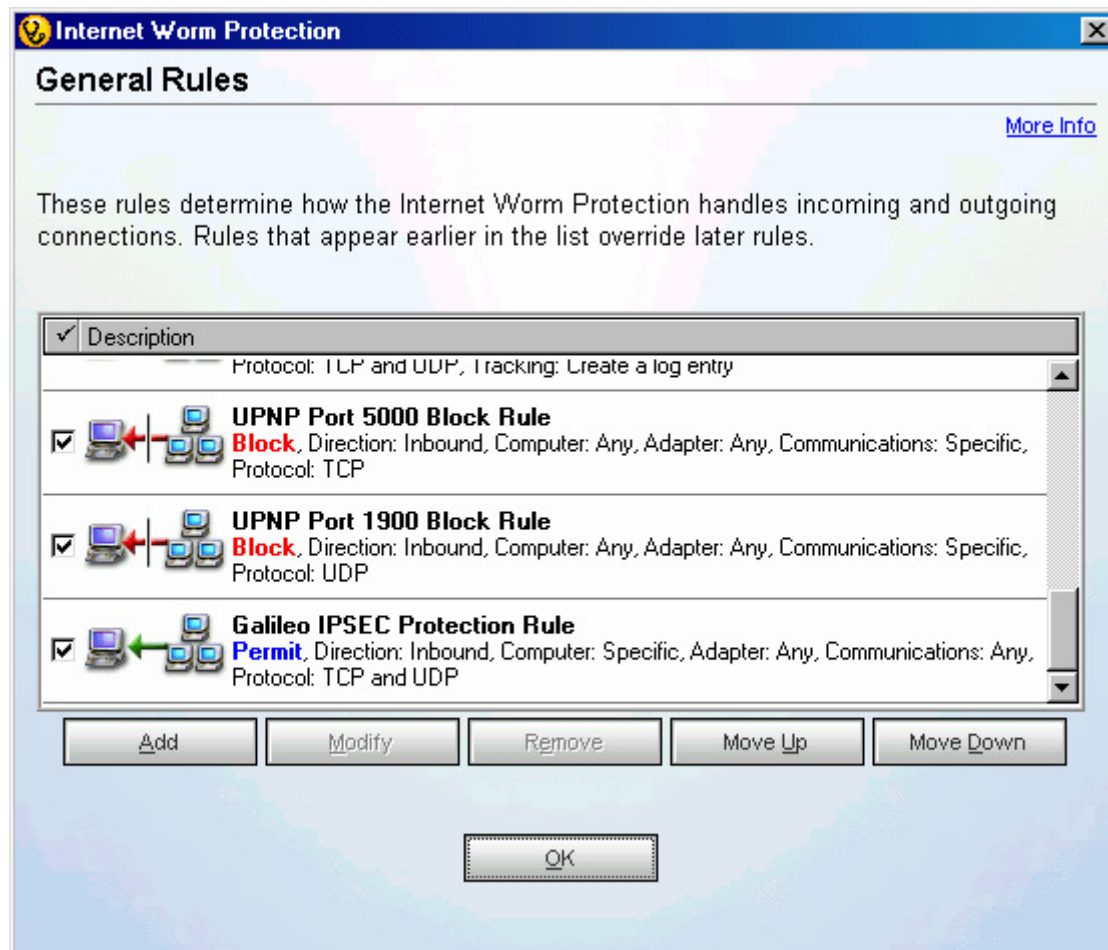




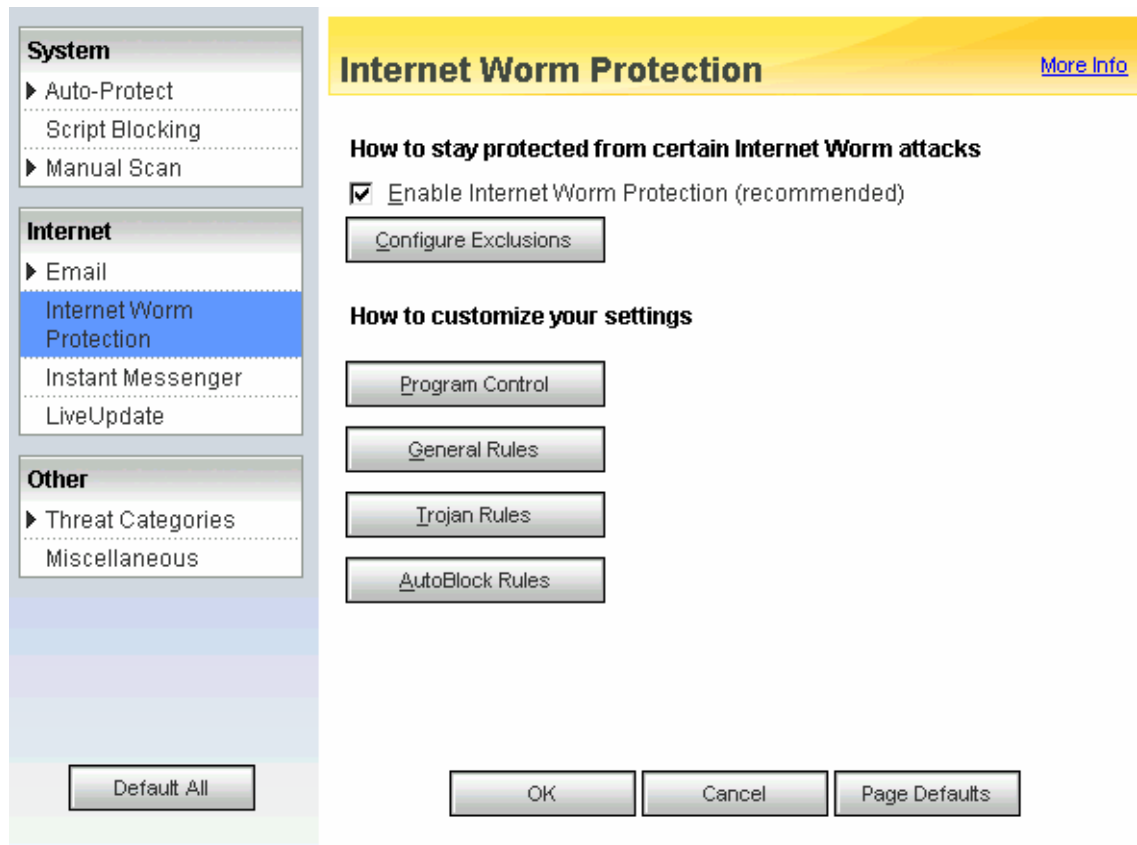
14. Click on “Finish”



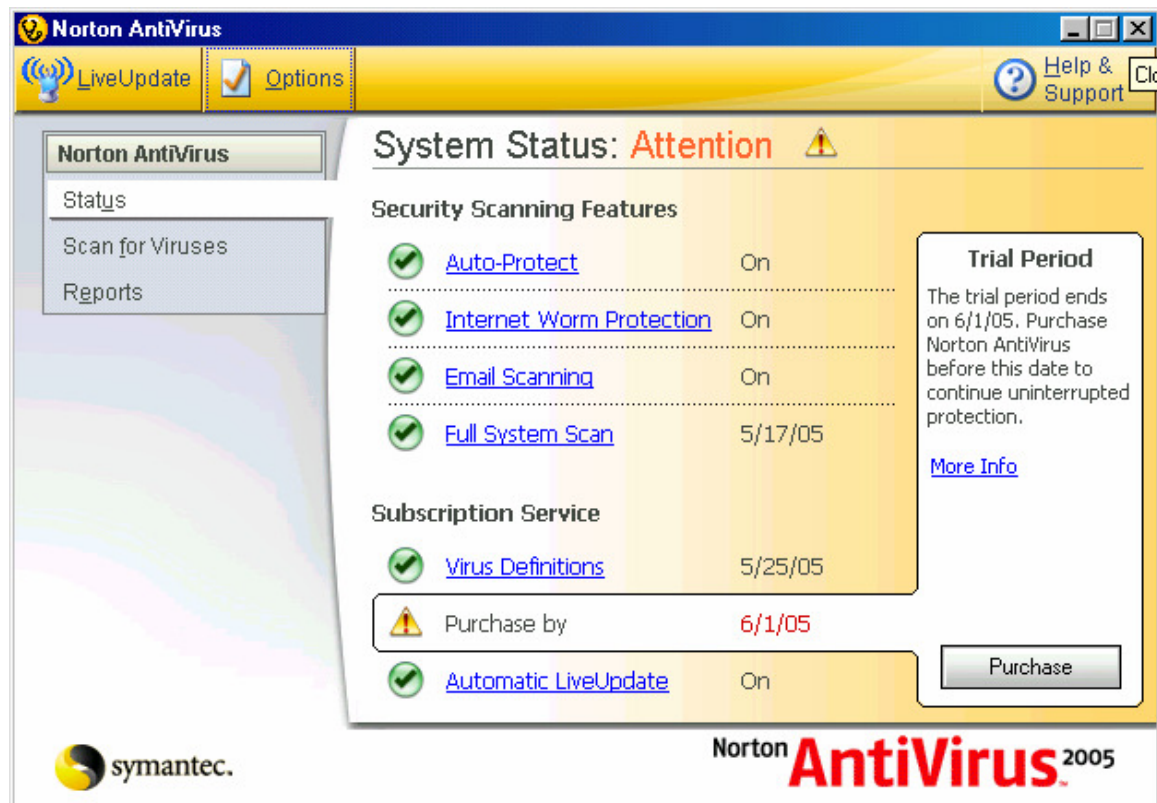
15. Click on “OK” to complete the addition of the Rule.



16. Click “Ok”.



17. Click on the “X” in the upper right hand corner to close out Norton Anti-Virus.



Note: At this point re-try the Nortel Client Connection.

You should now be able to connect to the Galileo system.

